

2016 Texas 4-H Photography Contest Rules & Guidelines



PURPOSE

The Texas 4-H Photography Contest encourages self-expression and allows youth to demonstrate skills learned in the area of photography, including the use of photographic equipment and process of photographs.

OBJECTIVES

- To develop life skills in composition, light, story line, posing, and awareness.
- To encourage 4-H members to use photography as a meaningful communication tool in their lives.
- To provide photography project showcase opportunity for senior 4-H members.
- To continue to share the message of 4-H.
- To utilize photographs which can promote and strengthen the 4-H program.

RULES AND PROCEDURES

Participation Grades	Senior age 4-H members between the grades of 9th and 12th as of September 1, 2015.
Photo Eligibility	Photo must be taken by participants between the dates of January 1, 2015 and the time of entry. Photos may be submitted only one time and in only one category.
Photo Format	Must be .jpeg, .jpg, or .gif formats.
County Entries	Each county may have only one entry per class for a total of 15 entries.
Entry Fee	\$10.00 per photograph paid through 4HConnect at the time of entry into this contest.
Entry Method	4HConnect: http://texas.4honline.com
Event Name	2016 State 4-H Photography Contest
Entry Period	Entry Open Date: April 1, 2016 Entry Close Date: April 15, 2016 Entries will not be accepted after 11:59pm on April 15, 2016
Size	Must be 8" x 10" in size and can be either portrait or landscape layout. Photos should be at least 800 pixels by 1000 pixels. The ideal 8x10 quality is 2400 pixels by 3000 pixels, which is the same as an 8x10 photo at 300 dpi (resolution). Higher variations of the 8x10 ratio are allowed but the final file size may not be larger than 2,048k (2MB). The best way to tell is to take the lower pixel number and divide by the higher pixel number. If you get 0.8 then you've successfully hit the mark. If your photos have a different pixel ratio you may still submit. However the photos will be judged using the 8x10 pixel dimensions. Which may cause your photo to appear stretched, compressed, or distorted. If you view a photo's properties on your computer it will tell you the width and height in pixels. View the resources for information on a free online photo resizer to assist with this process.
Alterations & Text usage	Alterations Although slight computer enhanced photos are allowed, such as crop, trimming, adjusting lighting, and red eye reduction; substantially altered photography, such as changing colors or applying design styles, using computer graphics will disqualify an entry. Any other alteration, manipulation, edits, to a photo would require the photo to be entered into the Digital Darkroom category. Text on Photographs Beyond the storyboard and digital darkroom categories photographs MUST NOT contain camera or user placed text. This includes such things as date stamps, comments, or titles. Text or wording that is part of the photograph (i.e. photo of a street sign, etc) is acceptable.
Original Work of 4-H member	Entry must be the original photographic work of the 4-H member and not a photo taken by family members, other 4-H members, or secured from any other printed/electronic source. Any photo proven to be found as not original work will result in disqualification of ALL the 4-H member's entries into the Photography Contest. Additionally, actions may be taken against the 4-H member in regards to the Consequences of Misbehavior and Code of Conduct signed by the 4-H member.

AWARDS, DISPLAY AND JUDGING

Awards and Recognition	<ol style="list-style-type: none"> Quality Awards: Blue, Red, White and Green Participation quality awards will be given to entries based on the scoring criteria. Best of Show Awards: One Best of Show Award will be presented to one photo in each category. Best of Show winners will be displayed in the Texas 4-H and Youth Development State Headquarters office following the contest. Cash Awards: Each Best of Show winner will receive a \$250.00 cash prize.
-------------------------------	--

Judging and Results	<p>Each photograph will be judged against a set of judging criteria, and not against photographs of peers. Based on total points awarded for each photograph, the participant will be awarded either a blue, red, white, or a participation ribbon. See Contest Judging Criteria</p> <p>Judges will determine the placings and all decisions are final. Results will be available after Texas 4-H Roundup concludes and will be published on the Texast 4-H website.</p>	
Roundup Display and Participation	<p>Photos will be displayed through a multimedia display at Texas 4-H Roundup.</p> <p>Photography contest participants do not attend State 4-H Roundup unless they are competing in another contest, however, if a 4-H member/adult chooses to attend to view the display they may do so, but are required to pay the necessary registration fee.</p>	
RELEASES		
Content	<p>Photos that are deemed obscene, vulgar, sexually-oriented, hateful, threatening, or otherwise violate any laws are strictly prohibited. The Texas 4-H Youth Development Program reserves the right to refuse inappropriate or unsuitable entries.</p>	
Copyright	<p>The Texas 4-H Youth Development Program respects the rights related to copyright laws and intellectual property. All photos should be based on a participant’s original photograph. Use of a photo from other sources/people without permission is not allowed.</p>	
Display and Future Usage Rights	<p>Participant grants permission to the Texas 4-H Youth Development Program, Texas A&M AgriLife Extension, the Texas 4-H Youth Development Foundation, and any other public or private agency authorized by the Texas 4-H Youth Development Program, the use, and rights associated to the use of the photographic likeness, in promotional publications, and other media, without compensation. Certain photos may be used for 4-H program and marketing uses.</p>	
Liability Release	<p>The Texas 4-H Youth Development Program, Texas A&M AgriLife Extension, the Texas 4-H Youth Development Foundation and/or its employees/agents involved in the contest will not be held liable for non-displayed photographs.</p>	
Model and Property Releases	<p>It is required that each participant have sufficient permission of any recognizable locations or people photographed. Documentation should be retained by the participant and be available upon request from the Texas 4-H Youth Development Program. This permission should be granted to both the photographer and the Texas 4-H Youth Development Program to publish and use as needed.</p>	
DISQUALIFICATION		
Reasons for disqualification	<ul style="list-style-type: none"> • County did not select/certify photograph to represent county • Does not meet category criteria (see category descriptions) • Entry does not follow rules or category guidelines • Entry fee not paid or only partial fee paid • Extremely poor quality (resolution) • Photography too small in size to be evaluated • Inappropriate or unsuitable • Manipulation of photo beyond what is allowed • Multiple county entries into a category 	<ul style="list-style-type: none"> • Photo entered into multiple categories • Photograph was not certified by county office in timely manner • Photograph was not entered into 4-H CONNECT • Broken content rule • Broken copyright rule • Broken display and future rights usage rule • Broken model and property release rule • Photo is not the work of the 4-H member <p>Disqualification for any reason will forfeit all entry fees.</p>

CATEGORIES

It is extremely important that 4-H members, project leaders, parents, and county Extension agents review the descriptions of each category very carefully. Please do not enter photographs into categories that are duplicates from other categories or ones that do not clearly meet the category description. Photographs that do not meet the description of the category will be disqualified.

CATEGORY DESCRIPTION

EXAMPLE

ANIMALS - DOMESTIC

Description

Photos focusing on the various animals that have been tamed and made fit for a human environment. To be considered domesticated, the animal must have their behavior, life cycle, or physiology systemically altered as a result of being under human control for many generations.

Examples

Dog, Sheep, Pig, Goat, Cow, Cat, Chicken, Horse, Camel, Goose, Ducks (domestic use), Hamsters.



CATEGORY DESCRIPTION

EXAMPLE

ANIMALS - WILDLIFE

Description

Category focuses on animals not tamed or domesticated and commonly found in the wild throughout the country and world. Photos can be of wildlife in nature, zoos, and/or petting zoos.

Examples

Deer, snakes, insects, rodents, elephants, etc.



CATCH-ALL

Description

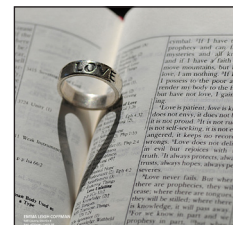
Category for photos that do not fit into one of the other categories. This includes such photos as still-life, motion-blur, Polaroid transfers, SX-70 images, handcolored photos.

What is NOT Allowed

Do not submit a photo in this category which can clearly be submitted in another photography category. Catch-all is not intended for counties to use to eliminate duplicate photos from multiple 4-H members.

Examples

Polaroid image & emulsion transfers, still-life, long exposure zoomed images, and painting with light.



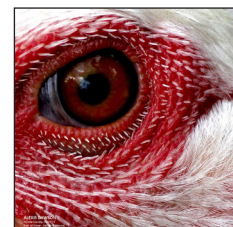
DETAILS & MACRO

Description

Getting in close is the name of the game for this category. We welcome pictures of small details that suggest a larger story. This is also the place for macro photographs (although a macro image of a flower might equally go into the Flowers category).

Examples

detail of a knot, a lock, or an abstract close-up - anything as long as it is a tight composition of a detail. Macro examples include parts of a flower bloom, insects, stamps, ice crystals, etc.



DIGITAL DARKROOM

Description

Photos are for digital art - images created or drastically altered in software like Adobe Photoshop®. For this category, a 4-H member will submit a minimum of at least two photos that demonstrate the before photo(s) and the altered, or final, digital piece. The multiple photos will illustrate the alterations made to the original photos. All photos should be incorporated into one file for submission.

Examples

Photoshop® composites and creations, images greatly manipulated with a variety of filters, photos with artistic borders, photos stitched into a panoramic.



DOMINANT COLOR

Description

Photos with a dominant color. The dominant element in the image must be a specific color, such as red, yellow, blue, white, black, white, green, etc. Black & White photos, duotones, are excluded from this category.

Examples

bowl of lemons, in a yellow bowl, on top of a yellow table covering, with a bright yellow tone sunlighting on it.



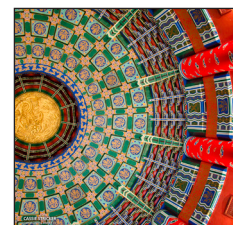
ELEMENTS OF DESIGN

Description

Images use of graphic elements of design. Photos that showcase line, shape, pattern, form, texture, perspective, etc. Photo can consist of any subject matter. Category is not for graphic illustrations made in commercial programs (i.e. Adobe Illustrator®) nor for extreme digital creations.

Examples

Perspective, Line, Pattern.



FOOD

Description

Category is a still life specialization of photography, aimed at producing attractive photographs of food for use in such items of advertisements, packaging, menus and/or cookbooks.

What is NOT Allowed

NO PHOTOS OF ALCOHOL
BEVERAGES ARE ALLOWED!

Examples

Thanksgiving dinner, cakes/pies, fruits and place settings, Easter eggs, sandwiches, ingredients, etc.



CATEGORY DESCRIPTION

EXAMPLE

MARINE/AQUATIC**Description**

Photos of any **LIVING ORGANISM** in bodies of either fresh or ocean (salt) water.

What is NOT Allowed

NO PHOTOS OF BOATS, SHIPS, OR FISHING SUPPLIES

Examples

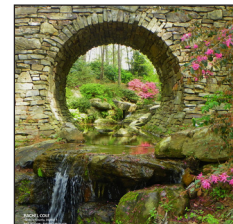
Fish, stingrays, whales, starfish, divers under water, etc.

**NATURE & LANDSCAPE****Description**

The focus of this category includes landscapes, outdoor scenics, nature images, sunsets, urban landscapes, seascapes, cityscapes, and farms. Images focus on the beauty of the outdoors.

Examples

Landscapes, Scenics, Outdoors.

**NIGHT PHOTOGRAPHY****Description**

Photos taken outdoors between after-dusk and before dawn. Generally these photos are achieved by using artificial light or using a long exposure. This category can include any subject as long as the focus is on the skill and technique used to acquire the photograph.

What is NOT Allowed

NO PHOTOS OF SUNSETS OR SUNRISES - NO SUNLIGHT AT ALL!!!!!!

Examples

fireworks, lighting on buildings/structures, animals, plant/flora, people, etc.

**PEOPLE****Description**

Photos focus from all walks of life, parenting and family, children, babies, models/fashion, sports, and couples. See Model and Property Releases

Examples

Kids & Family, Models/Fashion, Sports.

**PLANT/FLORA****Description**

Photos of interesting, unique, and beautiful flowers and flora. Photography can occur outdoors or indoors. Photo subject should be that of a single flower, plant, bush, tree, etc. Large collections of plant/flora should be considered for entry into the Nature & Landscape category.

Examples

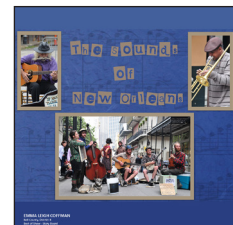
A rose, an upward shot of a tree, a flower bouquet, etc.

**STORYBOARD****Description**

A storyboard is one digital entry (one photo) that contains three smaller images and minimal text that tells a story. The story should be easily understood by the viewer. This entry is one single file.

Examples

Three images depicting the blooming of a rose bud at different stages, with the title of "Beginning of Beauty".

**THEME****Description**

Theme photo focuses on a subject announced and outlined in the contest rules and guidelines. For 2015-2016 the theme is "4-H, Ribbons, Awards and Recognition". This year the theme will focus still life arrangements of 4-H awards, ribbons, recognition. The arrangement and positioning of items will be strongly evaluated as well as the quality of the photo. Photo should create emotion and have impact!

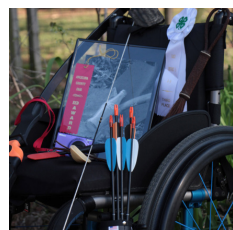
What is NOT Allowed

Livestock show auction, winning photos.

School, sports, church, or any outside of 4-H awards. The theme is to highlight 4-H awards.

Examples

A senior 4-H members awards, ribbons, belt buckles, and/or plaques arranged so it creates a strong story of success or the impact of 4-H.



JUDGING CRITERIA

Each photograph will be judged against the following set of judging criteria, and not against photographs of your peers. Based on total points awarded for each photograph, the participant will be awarded either a blue, red, white, or a participation ribbon. The elements for judging the photographs will be:

IMPACT (Max Points: 15)	Impact is the sense one gets upon viewing an image for the first time. Compelling images evoke laughter, sadness, anger, pride, wonder or another intense emotion. There can be impact in any of these twelve elements.
CREATIVITY (Max Points: 15)	Creativity is the original, fresh, and external expression of the imagination of the maker by using the medium to convey an idea, message or thought.
TECHNICAL (Max Points: 25)	Technical is the quality of the image itself as it is presented for viewing, which includes the following aspects: <ul style="list-style-type: none"> • allowable amounts of retouching and adjustments (removal of red eye, cropping, minor straightening) • sharpness and and correct color balance. • lighting, which includes the use and control of light. The use of lighting whether natural or man-made and its proper use to enhance the image. • Posing and capturing of the image
COMPOSITION (Max Points: 20)	Composition is important to the design of an image, bringing all of the visual elements together in concert to express the purpose of the image. Proper composition holds the viewer in the image and prompts the viewer to look where the creator intends. Effective composition can be pleasing or disturbing, depending on the intent of the image maker.
SUBJECT MATTER (Max Points: 15)	Subject Matter should always be appropriate to the story being told (i.e. category the photo is entered into) in an image. Subject matter also includes the center of interest for the photograph or where the maker wants the viewer to stop and they view the image.
STORY TELLING (Max Points: 10)	Story Telling refers to the image's ability to evoke imagination. One beautiful thing about art is that each viewer might collect his own message or read her own story in an image.

2016 Texas 4-H Photography Contest

Score Sheet



Name: _____ County: _____

Category: _____

You are competing against previously determined standards of excellence, not against your peers. Before preparing your entry for submission please carefully review the judging criteria.

JUDGES, PLEASE INDICATE POINTS AWARDED IN FAR RIGHT COLUMN:

CATEGORY	Minimum Points	Maximum Points	POINTS AWARDED
Impact	0	15	
Creativity	0	15	
Technical	0	25	
Composition	0	20	
Subject Matter	0	15	
Story Telling	0	10	
TOTAL POINTS AWARDED			

AWARD (circle one)	Blue Award (100 points to 81 points)	Red Award (80 to 51 points)	White Award (50 to 31 points)	Participant Award (30 to 0 points)
------------------------------	--	---------------------------------------	---	--

JUDGES COMMENTS: